

MOLECULAR DIAGNOSTICS TESTING SOLUTIONS

EXCELLENT PERFORMANCE OF RT-PCR TESTS FOR ACCURATE DIAGNOSIS & TRUE SCREENING

MOLgen SYNDROMIC FLAGSHIP PANELS

THE NEW APPROACH TO MOLECULAR APPLICATIONS

CE-IVD



SEXUALLY TRANSMITTED DISEASE



HPV HR/LR SCREEN / GENOTYPING



URINARY TRACT INFECTIONS (UTIS)



RESPIRATORY TRACT INFECTIONS



BLOODSTREAM INFECTIONS



MTB/NTM

MTB RIFAMPICIN / ISONIAZIDE

MTB FLUOQUINOLES / ETHIONAMIDE



MENINGITIS



GASTROENTERITIS



FEVER & RASH



BONE & JOINT INFECTIONS



ANTIBACTERIAL RESISTANCE



SARS COV-2 4 GENES

SARS COV-2 / FLU A-B / RSV A-B



CANDIDIASIS

TECHNICAL FEATURES

- Endogenous IC (RNase P)
- Fast Enzyme
- Touchdown PCR protocol
- Interpretation Software

Compatible thermal cyclers: MDXlab

Test Kit : Gastroenteritis RT-qPCR MX-24 Panel V3
File : 05.10.2023_GIS_PANEL_RUN1.post
Date : 10 Jan 2024 15:14:26
User : Adelin
Version : 6.9.2

All (288)		Positive (166)	Negative (224)	Issues (0)	Controls (46)
Select All					
Well	Sample	Target	Cq	Result	Warnings
G1	19741731049	Enterobacteriaceae E. coli	15.22	High Positive	
G2	19741731050	Enterobacteriaceae E. coli	20.01	Positive	
G3	19741731051	Campylobacter spp.	28.30	Low Positive	
F3	19741731052	Enterobacteriaceae E. coli	24.70	Positive	
G4	19741731053	Neisseria	22.82	Positive	
G5	19741731054	Enterobacteriaceae E. coli	26.35	Low Positive	
G6	19741731055	Neisseria	25.43	Positive	
G7	19741731056	Neisseria	14.58	High Positive	
A7	19741731057	Sapovirus	17.50	Positive	
F7	19741731058	Shiga toxin producing E.	20.20	Positive	
G7	19741731059	Enterobacteriaceae E. coli	27.18	Low Positive	
B8	19741731060	Enterobacteriaceae E. coli	5.14	High Positive	
G9	19741731061	Campylobacter spp.	22.37	Positive	
G9	19741731062	Enterobacteriaceae E. coli	13.4	High Positive	
B10	19741731063	Campylobacter spp.	21.11	Positive	
B10	19741731064	Enterobacteriaceae E. coli	27.68	Low Positive	

PLATE VIEW

	FAM	HEX	ROX	Cy5	1	2	3	4	5	6	7	8	9	10	11	12
A	S	S	S	S	S	S	S	S	S	S	S	S	S	S	S	PC
B	S	S	S	S	S	S	S	S	S	S	S	S	S	S	S	PC
C	S	S	S	S	S	S	S	S	S	S	S	S	S	S	S	PC
D	S	S	S	S	S	S	S	S	S	S	S	S	S	S	S	PC
E	S	S	S	S	S	S	S	S	S	S	S	S	S	S	S	PC
F	S	S	S	S	S	S	S	S	S	S	S	S	S	S	S	PC
G	S	S	S	S	S	S	S	S	S	S	S	S	S	S	S	PC
H	S	S	S	S	S	S	S	S	S	S	S	S	S	S	S	PC

PC : Positive Control NC : Negative Control Fluorophores : FAM / HEX / ROX / Cy5

Cancel



Adaltis developed comprehensive solutions for the Molecular Diagnostics.

Fully automated systems DNA Extraction and PCR Analysis. Supported with wide range of CE-IVD reagents.

- **EXTRA**lab - Advanced robotic systems for extraction & PCR set-up.
- **eLab** - Semi-automatic system for extraction & purification of nucleic acids.
- **AMPLi**lab - Fully-automated Real-time PCR System for Molecular Biology Analysis.
- **MOLgen** - MDx kits and reagents for DNA/RNA complete extraction providing a wide range of clinical specimens (liquids, tissue, cells etc.).
- **MDX**lab - All-In-One MDx Solution.

All our assays are fully validated and are as ready-to-start applications available and standard operational on our instruments.

Sample Collection

Respiratory tract swab
Blood
CSF
Tissue
Sputum
BAL
NAP
Stool
Urine
Genital
Rectal Swab
Lesion

ALL TARGETS IN
MICROBIOLOGY

LESS THAN AN HOUR



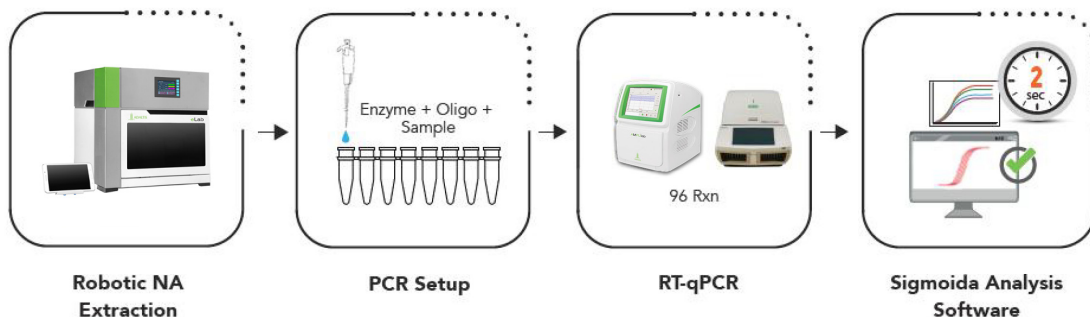
Test Report



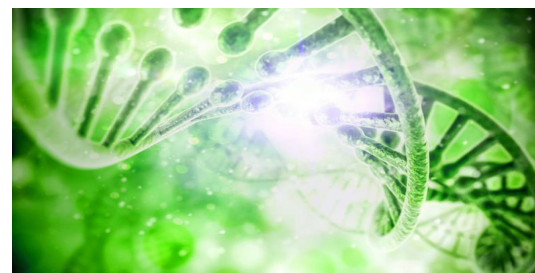
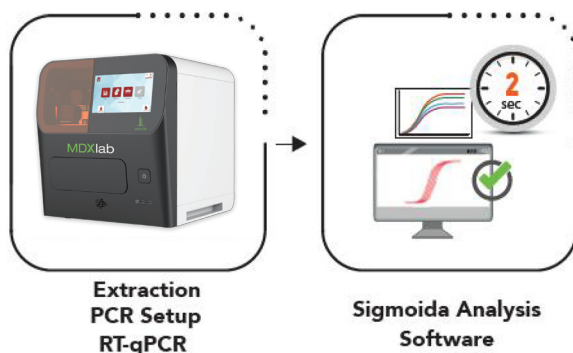
Precision Medicine
Targeted Treatment
Hospital Infection
Control



FLEXIBLE
qPCR FORMAT
FOR A VARIETY
OF APPLICATIONS



MOLgen
SAMPLE-
TO-ANSWER
SOLUTIONS



For more information

WWW.ADALTIS.NET



Customer Care Center:
e-mail: info@adaltis.net

Technical Assistance:
e-mail: service@adaltis.net

Legal Registered Office
Via Durini, 27
20122 Milano, Italy

Tel: + 39 0774 5791
Fax: + 39 0774 353085

Sales and Marketing Office
e-mail: sales@adaltis.net

Order handling and Logistics
e-mail: order@adaltis.net

Adaltis S.r.l. Headquarter
Production and
Development Plant

Via Luigi Einaudi 7
Guidonia di Montecelio
00012 Rome, Italy

ADALTIS is certified in compliance with ISO9001 and ISO 13485.
Our products are CE-IVD.