

# Miura Family

Fully-automated Clinical Chemistry Analysers

Catalogue of Products

**ISE** S.r.l.

CUSTOMISED SOLUTIONS  
FOR YOUR LABORATORY



check our website at [www.logotech-ise.com](http://www.logotech-ise.com)

for news and updates



## Company Contacts

Name	Function	Office Phone	Fax Number	E-mail
Marco Spadaccioli	General Manager	+39 0774 579 334	+39 0774 353 085	m.spadaccioli@logotech-ise.com
Daniele Spadaccioli	Director	+39 0774 579 321	+39 0774 353 085	d.spadaccioli@logotech-ise.com
Gianfranco Grifoni	R&D Director	+39 0774 579 308	+39 0774 353 085	g.grifoni@logotech-ise.com
Massimo Romano	Production Director	+39 0774 579 310	+39 0774 353 085	m.romano@logotech-ise.com
Alessandro Ballini	Service Department	+39 0774 579 364	+39 0774 353 085	service@logotech-ise.com
Claudio Ruggeri	R&D SW Developer	+39 0774 579 358	+39 0774 353 085	c.ruggeri@logotech-ise.com
Leonardo Nocera	QC Instruments	+39 0774 579 374	+39 0774 353 085	l.nocera@logotech-ise.com
Claudia Piattellini	Purchase Department	+39 0774 579 365	+39 0774 353 085	c.piattellini@logotech-ise.com
Melinda Ugrenic	Customer Care	+39 0774 579 326	+39 0774 353 085	m.ugrenic@logotech-ise.com

# Miura Family

Fully-automated Clinical Chemistry Analysers

## Miura One

Fully-automated  
Clinical Chemistry Analyser  
up to 180 tests/hour



## Miura 200

Fully-automated  
Clinical Chemistry Analysers  
up to 420 tests/hour



## Miura

Fully-automated  
Clinical Chemistry Analyser  
up to 500 tests/hour



SOFTWARE



REAGENTS

OUR PRODUCTS



MIURA ONE



# PURE RANDOM ACCESS

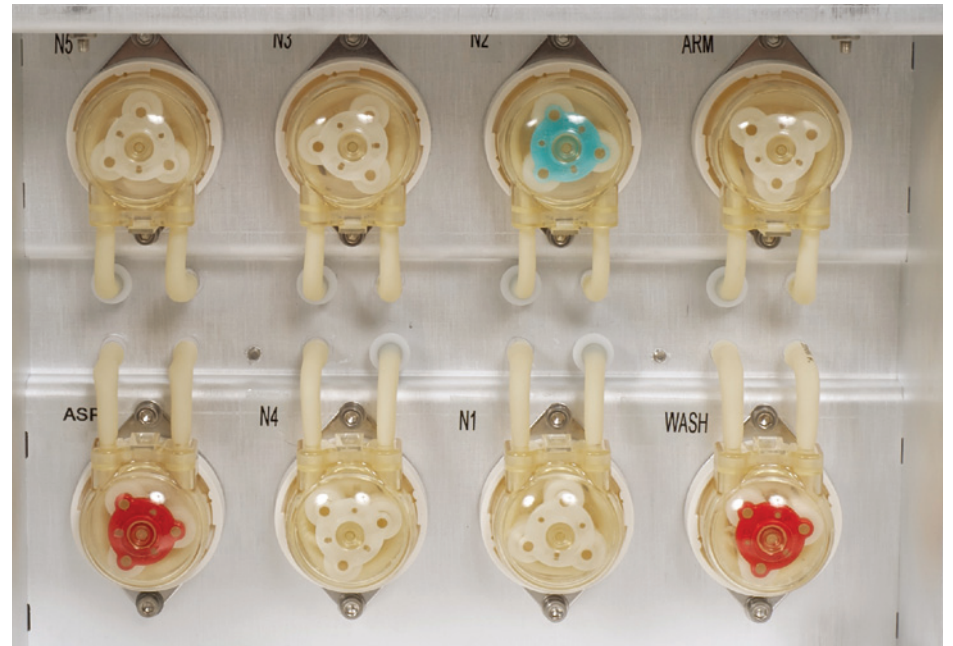
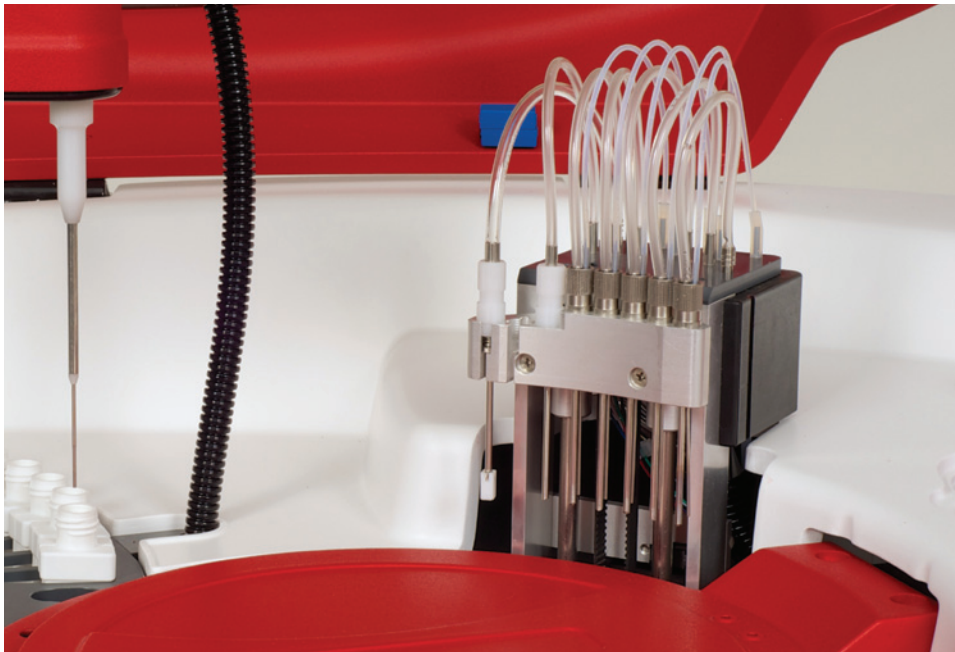
## Miura One

Fully-automated Clinical Chemistry Analyser  
up to 180 tests / hour with ISE module on board

- Miura One is a small yet smart random access fully automated analyser.
- Miura One is designed to meet the requests of labs, doctor offices, clinics and veterinary labs.
- 2 different reagents/samples configuration.
- 19 reagents on board with 50ml R1 vials and/or 20ml R2 vials plus 9 samples plus diluent.
- 19 reagents on board with 35ml vials and/or 15ml R2 vials plus 15 samples plus diluent.
- Integrated ISE module for Na<sup>+</sup>, K<sup>+</sup>, Li<sup>+</sup>, Cl<sup>-</sup> in serum, plasma and diluted urine (optional).
- Integrated washing station.
- Integrated level and shock sensor for samples and reagents.
- Integrated positive identification for samples and reagents.
- Integrated micro metering diluter. No glass syringe.
- 2 years warranty.
- Miura One is 100% developed and produced in Italy.







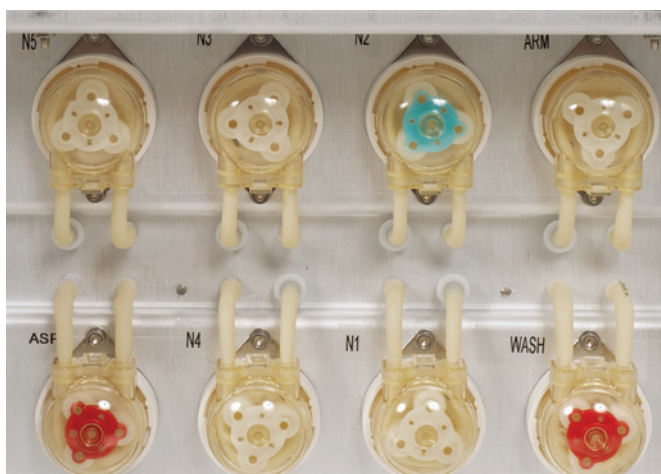
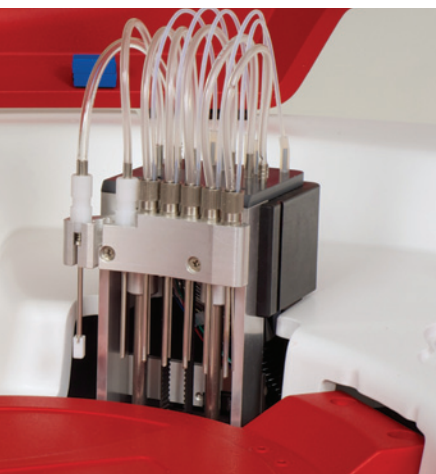
# TECHNICAL SPECIFICATIONS



- Up to 180 tests per hour with ISE module on board.
- Up to 120 photometric tests per hour.
- Analytical methods: end point mono or bichromatic, fixed time, kinetic, differential sample blank.
- ISE module for: Na<sup>+</sup>, K<sup>+</sup>, Li<sup>+</sup>, Cl<sup>-</sup> in serum, plasma and diluted urine (optional).
- 19 parameters on line plus diluent with 50ml R1/ 20ml R2 vials.
- 19 parameters on line plus diluent with 35ml R1/ 15ml R2 vials.
- Mono, double, triple reagents method.
- Reaction temperature: +37°C ± 0.1°C.
- 9/15 sample/calibrator/control positions on primary tubes (Ø12÷13mm × 75/85mm) and sample cups (3ml).
- Automatic dilution of the samples.
- Calibration with linear/non linear curves up to 8 points, auto dilution of the calibration curve (linear regression, linear piece-wise, cubic spline, polynomial).
- Control menu with Levy-Jennings plot.
- Bar-code reader integrated for samples and reagents (optional).
- Arm equipped with liquid level detector (capacitive) and shock sensor.
- High Precision Micro-metering pump to dispense reagents and samples (no syringe).
- Reagent volume: 1÷400 microliters.
- Sample volume: 1÷300 microliters.
- Typical reaction volume: 200-250 microliters.
- Wavelengths on-board: 8 from 340nm to 700nm plus one free position.
- Light source: Long life halogen lamp (2000 hours).
- Photometric linearity: 0÷3.0 OD.
- Reading cuvette: 80 on-board re-washable made in Bionex®.
- Cuvette washing: automatic washing station.
- Water consumption: 1 1/2 liters per hour.
- Reagent cooler: 14°C below ambient temperature.
- All in one touch screen computer.
- L.I.S.: Bi-directional connection.
- Operative system: MS Windows®.
- Environment temperature 18-32°C.
- Dimensions: 76x62x64 cm.
- Weight: 42 kg.



MIURA 200





# PURE RANDOM ACCESS

## Miura<sup>200</sup>

Fully-automated Clinical Chemistry Analyser  
up to 420 tests / hour with ISE module on board

- The New Miura 200 is the idea we have for a compact bench top random access fully automated analyser with the performance of higher class instruments.
- No compromise between throughput and size of the New Miura 200.
- The New Miura 200 is the solution for all kinds of laboratories as a main unit or a back up unit.
- 30/43 reagents on board plus diluent.
- 49 samples on board.
- Integrated ISE module for Na<sup>+</sup>, K<sup>+</sup>, Li<sup>+</sup>, Cl<sup>-</sup> in serum, plasma and diluted urine (optional).
- Integrated washing station.
- Integrated level and shock sensor for samples and reagents.
- Integrated positive identification for samples and reagents.
- Integrated micro metering diluter maintenance free.
- 2 years warranty.
- Miura 200 is 100% developed and produced in Italy.







# TECHNICAL SPECIFICATIONS

## Double arm

- Up to 420 tests per hour with ISE module on board.
- 240 Bi-reagent photometric tests/hour constant throughput.

## Single arm

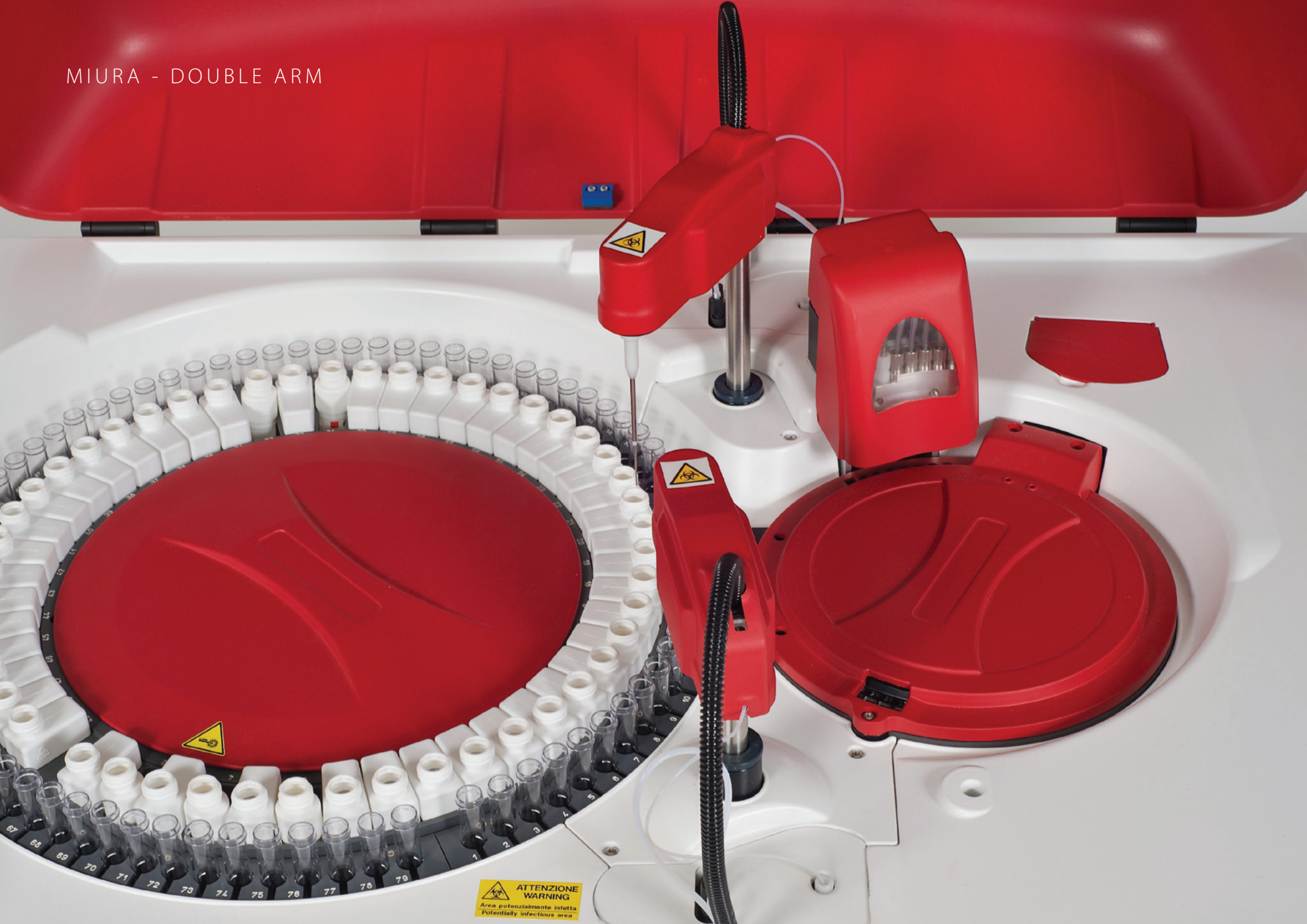
- Up to 360 tests per hour with ISE module on board.
- Up to 200 mono reagent tests per hour.

## Common Specifications

- Analytical methods: end point mono or bichromatic, fixed time, kinetic, differential sample blank.
- ISE module for: Na<sup>+</sup>, K<sup>+</sup>, Li<sup>+</sup>, Cl<sup>-</sup> in serum, plasma and diluted urine (optional).
- 30/43 reagents on board plus diluent.
- Mono, double reagents method.
- Reaction temperature: +37°C ± 0.1°C.
- 49 sample/ calibrator/control positions on primary tubes (Ø 12÷13mm/75/100mm).
- Automatic dilution of the samples.
- Calibration with linear/non linear curves up to 8 points, auto dilution of the calibration curve (linear regression, linear piece-wise, cubic spline, polynomial).
- Control menu with Levy-Jennings plot.
- Bar-code reader integrated for samples and reagents (optional).
- Arm equipped with liquid level detector (capacitive) and shock sensor.
- High precision micro-metering pump to dispense reagents and samples (no syringe).
- Reagent volume: 1÷400 microliters.
- Sample volume: 1÷300 microliters.
- Typical reaction volume: 200-250 microliters.
- Wavelengths on board: 8 from 340nm to 700nm plus one free position.
- Light source: Long life halogen lamp (2000 hours).
- Photometric linearity: 0÷3.0 OD.
- Reading cuvette: 80 on board re-washable made in Bionex®.
- Cuvette washing: automatic washing station.
- Water consumption: 3/2 liters per hour.
- Reagent cooler: 14°C below ambient temperature.
- All in one touch screen computer.
- L.I.S.: Bi-directional connection.
- Operative system: MS Windows®.
- Environment temperature 18-32°C.
- Dimensions: 93x72x60.



# MIURA - DOUBLE ARM





# PURE RANDOM ACCESS

## Miura

Fully-automated Clinical Chemistry Analyser

Double Arm - up to 500 tests / hour with ISE module on board



- Miura is a random access fully automated analyser and is the right solution for all kinds of laboratories.
- Miura is a sophisticated yet user friendly solution.
- The smart software interface, designed to be used in few steps and translated in several different languages, makes the Miura the logic choice for the laboratories all over the world.
- Bench top or floor stand.
- 49 reagents on board with 50ml R1 vials and/or 20ml R2 vials.
- 59/79 samples on board.
- Integrated ISE module for Na<sup>+</sup>, K<sup>+</sup>, Li<sup>+</sup>, Cl<sup>-</sup> in serum, plasma and diluted urine (optional).
- Integrated washing station.
- Integrated level and shock sensor for samples and reagents.
- Integrated positive identification for samples and reagents.
- Integrated micro metering diluter maintenance free.
- 2 years warranty.
- This is our idea of a random access analyser.
- Miura is 100% developed and produced in Italy.

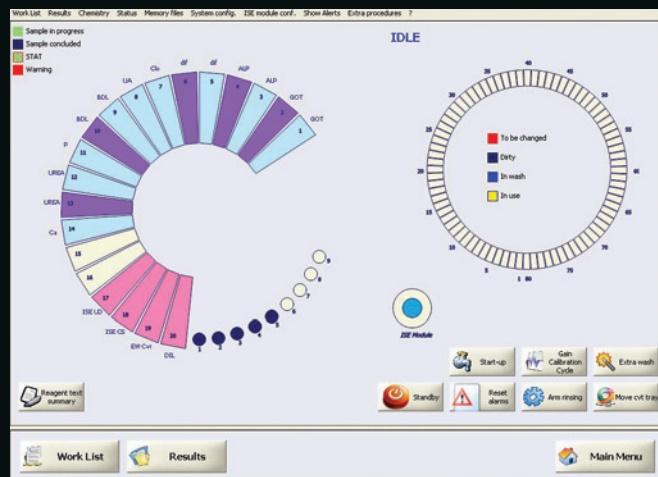




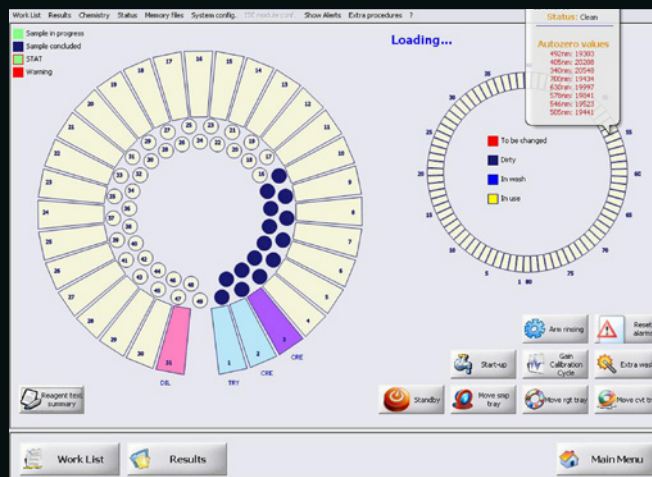
# TECHNICAL SPECIFICATIONS



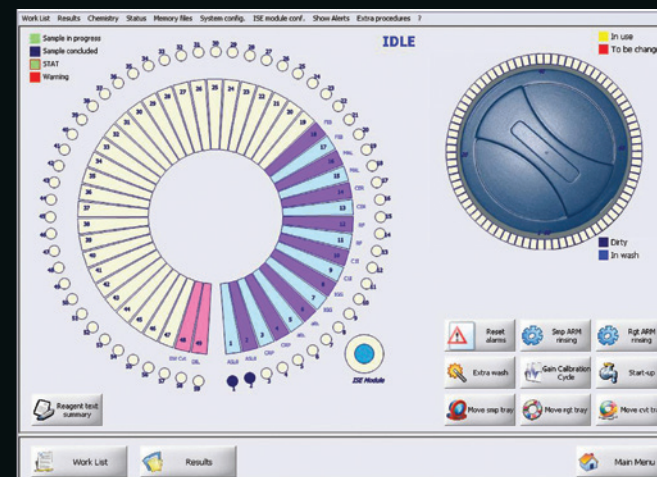
- Up to 500 tests per hour with ISE, Up to 300 photometric tests / hour.
- 59/79 sample/calibrator/control positions on primary tubes (Ø12÷13mm × 75/100mm) and sample cups (3ml).
- Analytical methods: end point mono or bichromatic, fixed time, kinetic, differential sample blank,
- Integrated ISE module for: Na<sup>+</sup>, K<sup>+</sup>, Li<sup>+</sup>, Cl<sup>-</sup> in serum, plasma and diluted urine (optional).
- 48 parameters on line plus diluent with 50ml R1/20ml R2 vials.
- Mono, double, triple reagents method.
- Reaction temperature: +37°C ± 0.1°C.
- Automatic auto dilution of the samples.
- Calibration with linear/non linear curves up to 8 points , auto dilution of the calibration curve (linear regression, linear piece-wise, cubic spline, polynomial).
- Control menu with Levy-Jennings plot.
- Bar-code reader integrated for samples and reagents (optional).
- Arm equipped with liquid level detector (capacitive) and shock sensor.
- High Precision Micro-metering pump to dispense reagents and samples (no syringe).
- Reagent volume: 1÷400 microliters.
- Sample volume: 1÷300 microliters.
- Typical reaction volume: 200-250 microliters.
- Wavelengths on-board: 8 from 340nm to 700nm plus one free position.
- Light source: Long life halogen lamp (2000 hours).
- Photometric linearity: 0÷3.0 OD.
- Reading cuvette: 80 on-board re-washable made in Bionex®.
- Cuvette washing: automatic washing station.
- Water consumption: 3 liters per hour.
- All in one touch screen computer.
- L.I.S.: Bi-directional connection.
- Operative system: MS Windows®.
- Environment temperature 18-32°C.
- Bench top version Dimensions: 114x75x60 cm. Weight: 80 kg.
- Floor stand version Dimensions: 190x77x132 cm. Weight: 155 kg.



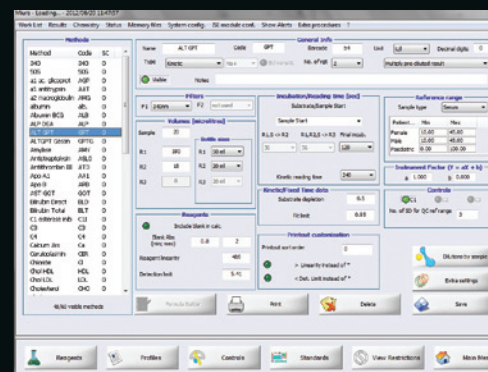
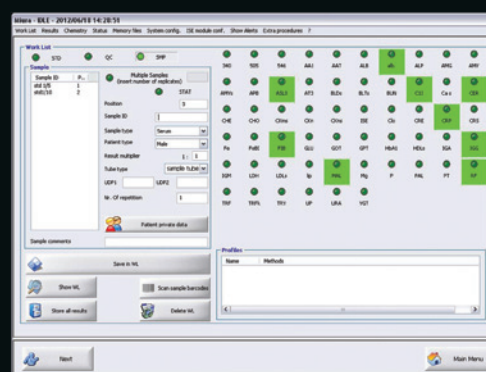
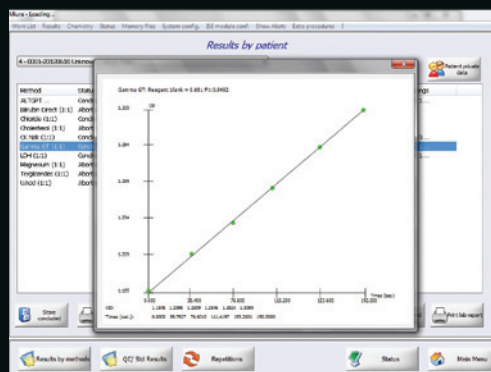
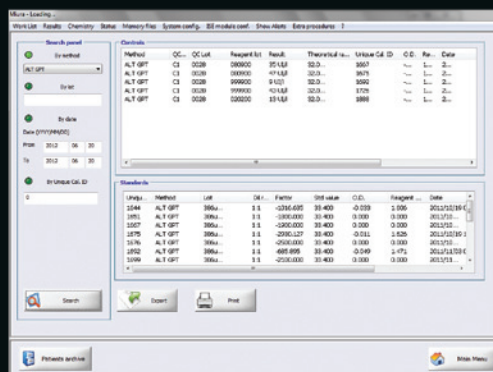
Miura One



Miura 200



Miura





# MIURA FAMILY SOFTWARE

MAKES YOUR LIFE EASIER IN THE LAB

Miura Family software, developed by I.S.E. Group, is Windows® based software that is designed to give you an 'ease of use experience' with all our fully automated Miura analysers.

Miura software provides you with instant flexibility, fast programming sample routine in combination with different test profiles next to monitoring of daily test routines as well for fast lookup about patient history test data, it are all standard features in this straightforward and undemanding operator software.

Visualization of work sessions will give you an easy and clear insight in a split second. Combined with maximum flexibility in programming, the user can have a fast introduction of new methods and applications to a maximum grade of freedom. A virtually unlimited number of test protocols and test data is automatically storable and accessible to the Miura system. Neat panel draw ups provide the operator a maximum choice for his needs.

Only One training session on Miura operational software, will be sufficient for understanding and getting started with smoothly operating all models of our Miura automated analysers: a training session that reduce your service costs!

## Main software characteristics:

- Programmable instrument stand-by and wake-up functionality.
- Intuitive, modern and 'ease of use' graphical user interface that guides the user hassle free through all operations.
- Display of quality control levels with Levy-Jennings graphics.
- Fully bidirectional L.I.S. support with or without Host/Query.
- Smart visualization from all types of calibrations.
- Self-diagnosis and alarm procedures are an integral part of the Miura software.
- Custom made profiles for easy operation.
- Powerful and expandable archive for patients test result, including standards and QC-results.
- Active monitoring of reagents and main instrument liquid levels.
- Compact maintenance module active on demand.

# STABLE LIQUID REAGENTS

- The Miura family wants to simplify your routine work. I.S.E. Group offers a complete CE marked reagent panel (mono or bi-reagent) ready to use.
- Positive identification of reagents gives the end user the assurance to work without compromises on quality.
- Twenty-eight parameters for enzymes and substrates, with application on serum, plasma and urine, based on the most advanced research in clinical chemistry following international recommendations (IFCC).
- Twenty-eight parameters for specific protein, with application on serum, plasma and urine, standardized with 5-point calibration curve.



CODE DESCRIPTION	
A-R010000001	ALBUMIN BCG
A-R0200001001	ALT / GPT SL
A-R0000000001	AMYLASE
A-R0200001101	AST / GOT SL
A-R0100001001	URIC ACID
A-R0100000201	DIRECT BILIRUBIN
A-R0100000101	TOTAL BILIRUBIN
A-R0100000301	CALCIUM ARSENAZO
A-R0100000501	CHOLESTEROL PAP
A-R0200000301	CK NAC SL
A-R0200000401	CK MB SL
A-R0200000501	CREATININE
A-R0200000601	GAMMA GT SL
A-R0100000601	GLUCOSE PAP
A-R0200001301	HDL CHOLESTEROL
A-R0200001401	LDL CHOLESTEROL
A-R0200001201	LDH-P SL
A-R0200000801	MAGNESIUM
A-R0200000001	ALP (DEA) SL

CODE DESCRIPTION	
A-R0100000701	PHOSPHOROUS UV
A-R0100000801	TOTAL PROTEIN
A-R0100000901	TRIGLYCERIDES
A-R0200000901	UREA UV SL
A-R0200000600	IRON TIBC
A-R0200000400	CHOLINESTERASE
R0300000006	MULTICALIBRATOR
R0400000006	NORMAL CONTROL SERUM
R0400000106	PATHOLOGICAL CONTROL SERUM
A-R1100004201	TRANSFERRIN
A-R1100004001	CRP
A-R1100000101	ALBUMIN
A-R1100002601	COMPLEMENT C3
A-R1100003201	COMPLEMENT C4
A-R1100002001	CERULOPLASMIN
A-R1100000601	HAPTOGLOBIN
A-R1100003001	PREALBUMIN
A-R1100000201	APOLIPO PROTEIN A1
A-R1100000301	APOLIPO PROTEIN B

CODE DESCRIPTION	
A-R1100004101	RHEUMATOID FACTOR
A-R1100003401	IgA KIT
A-R1100003501	IgG KIT
A-R1100003601	IgM KIT
A-R1100003701	KAPPA LIGHT CHAIN
A-R1100003801	LAMBDA LIGHT CHAIN
A-R1100003901	MICROALBUMIN
A-R1100001401	ALFA-1 - ACID GLYCOPROTEIN
A-R1100001301	ALFA-1 - ANTITRYPSIN
A-R1100002201	ALFA-2 MACROGLOBULIN
A-R1100003301	FIBRINOGEN
A-R1100001901	C1 ESTERASE INHIBITOR
A-R1100002501	ANTITHROMBIN III
A-R1100004301	FERRITIN
A-R1100002901	LIPOPROTEIN (A)
A-R1100001801	BETA 2 - MICROGLOBULIN
A-R1100004401	ANTI-STREPTOLYSIN (O)
A-R0200000900	HBA1C



R&D and Production:

I.S.E. S.r.l.  
Via Luigi Einaudi, 7  
Guidonia Montecelio  
00012 Rome, Italy

Tel: + 39 0774 579 365  
Fax: + 39 0774 353 085

Legal site:  
I.S.E. S.r.l.  
Via delle Driadi, 45  
00133 Rome, Italy



I.S.E. is a dynamic company specialized in development and manufacturing of Laboratory Analysers and associated Reagents.

I.S.E. is an ISO 9001:2008 and ISO 13485:2012 certified company and all our products are CE marked. Several other certifications available.

I.S.E. have thousands of solutions installed worldwide. I.S.E. provides to our customers high end, high quality and reliable solutions of Analysers and Reagents.

Ease of use, combined with minimal operating requirements makes ISE systems the best choice for any laboratory.

We are dedicated to customer satisfaction and will do the utmost to respond quickly to your needs.



[www.logotech-ise.com](http://www.logotech-ise.com)

Customer Care Center:  
[info@logotech-ise.com](mailto:info@logotech-ise.com)

Tel: +39 0774 579 326  
Fax: +39 0774 579 085

Sales and Marketing office:  
[sales@logotech-ise.com](mailto:sales@logotech-ise.com)

Tel: +39 0774 579 334  
Fax: +39 0774 579 085

Technical service:  
[service@logotech-ise.com](mailto:service@logotech-ise.com)

Tel: +39 0774 579 364  
Fax: +39 0774 579 085

Order handling and logistics:  
[order@logotech-ise.com](mailto:order@logotech-ise.com)

Tel: +39 0774 579 365  
Fax: +39 0774 579 085

© June 2016 Ref. BR01008 V2.6 I.S.E. S.r.l.

All rights reserved. All trademarks are property of their respective owners. Specifications are subject to change without notice.

